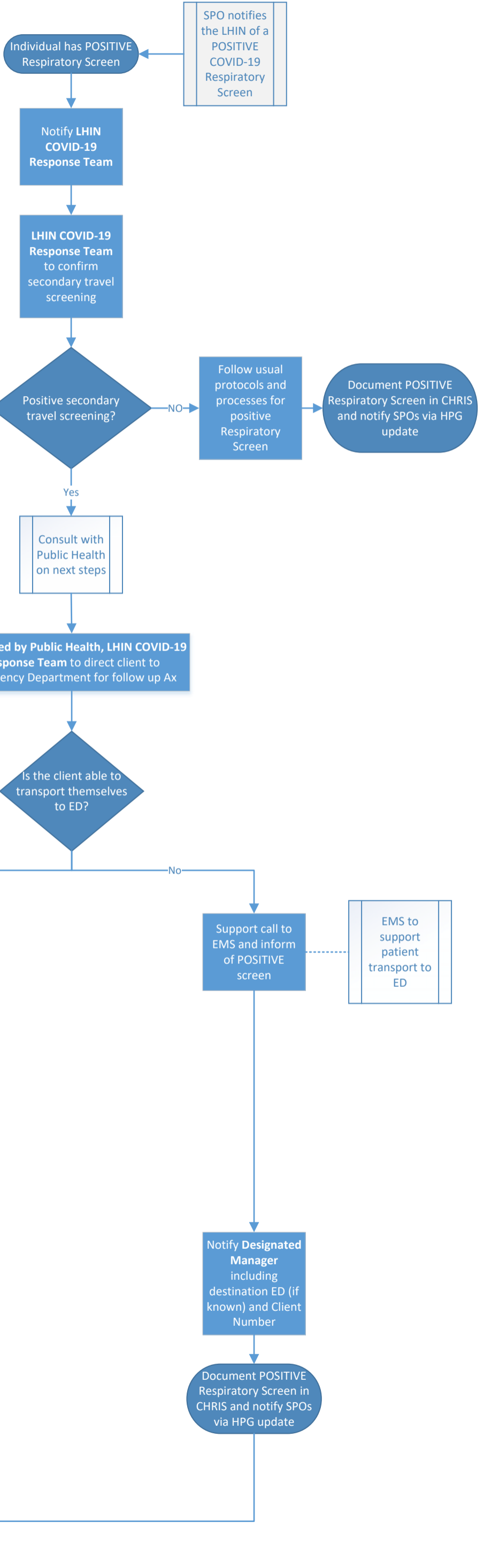


**COVID-19 (Novel Coronavirus) POSITIVE Screen  
Algorithm for Home & Community Care Staff**

February 27, 2020

See COVID-19 Screening Tool  
Best practice remains for all LHIN staff and SPOs to complete a respiratory screen *prior* to each home visit



If client is unwilling to present to ED, escalate as per internal processes and ensure referral to Public Health.

A person in need of further assessment should travel by themselves in a personal vehicle where possible. If it is not possible, follow the guidance provided by public health

Key hospital contacts for COVID-19 notification

EMS to support patient transport to ED