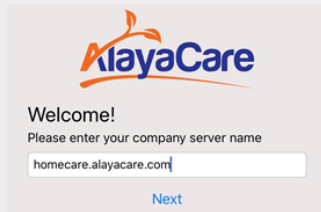


COVID-19 SCREENER FORM

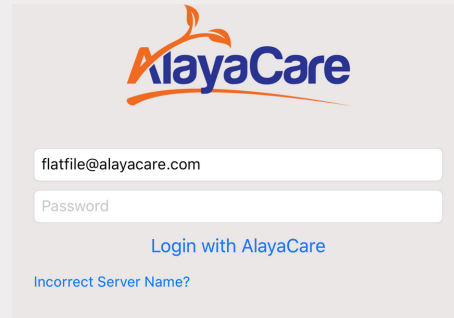


1

LOGIN



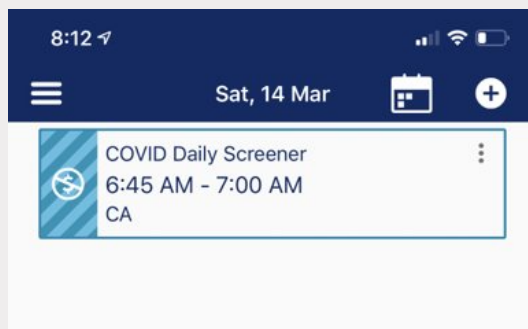
The first time you log in, please enter your AlayaCare URL. You will only need to enter it once.



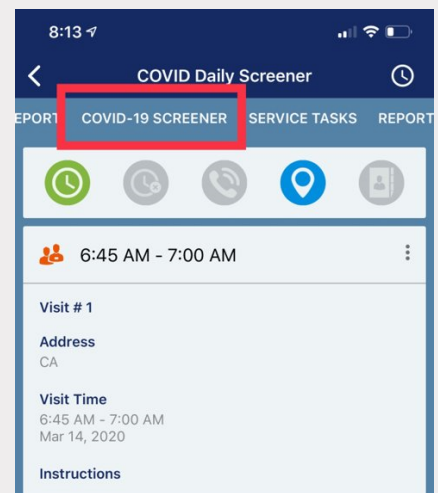
Then, login into the AlayaCare App using your work email and password.

2

VIEW SCHEDULE & COMPLETE YOUR EMPLOYEE SCREENER FORM



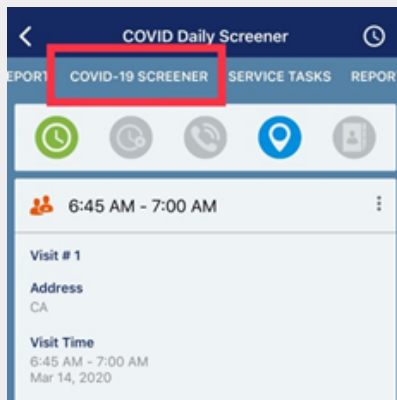
Open your Daily Screener visit and click the COVID-19 Screener to complete the form prior to your first visit each day.



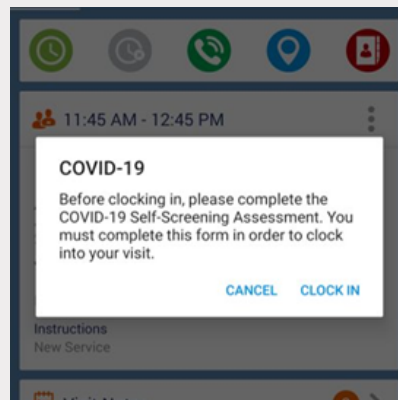
3

COMPLETE THE CLIENT SCREENER FORM

Once you've completed the above steps and are ready to clock into your first visit...



There will be a COVID Screener Form on the menu bar for each client visit, similar to what was present on the internal COVID Screening client.



Upon clock in at each visit, a notification will appear, promoting you to complete the screener for the client you are visiting that shift.

